



QUESTIONS RELATING TO THE BUILT ENVIRONMENT.
THEY ENABLE YOU TO OBTAIN RETROFIT COMPONENTS.



GREEN CARDS

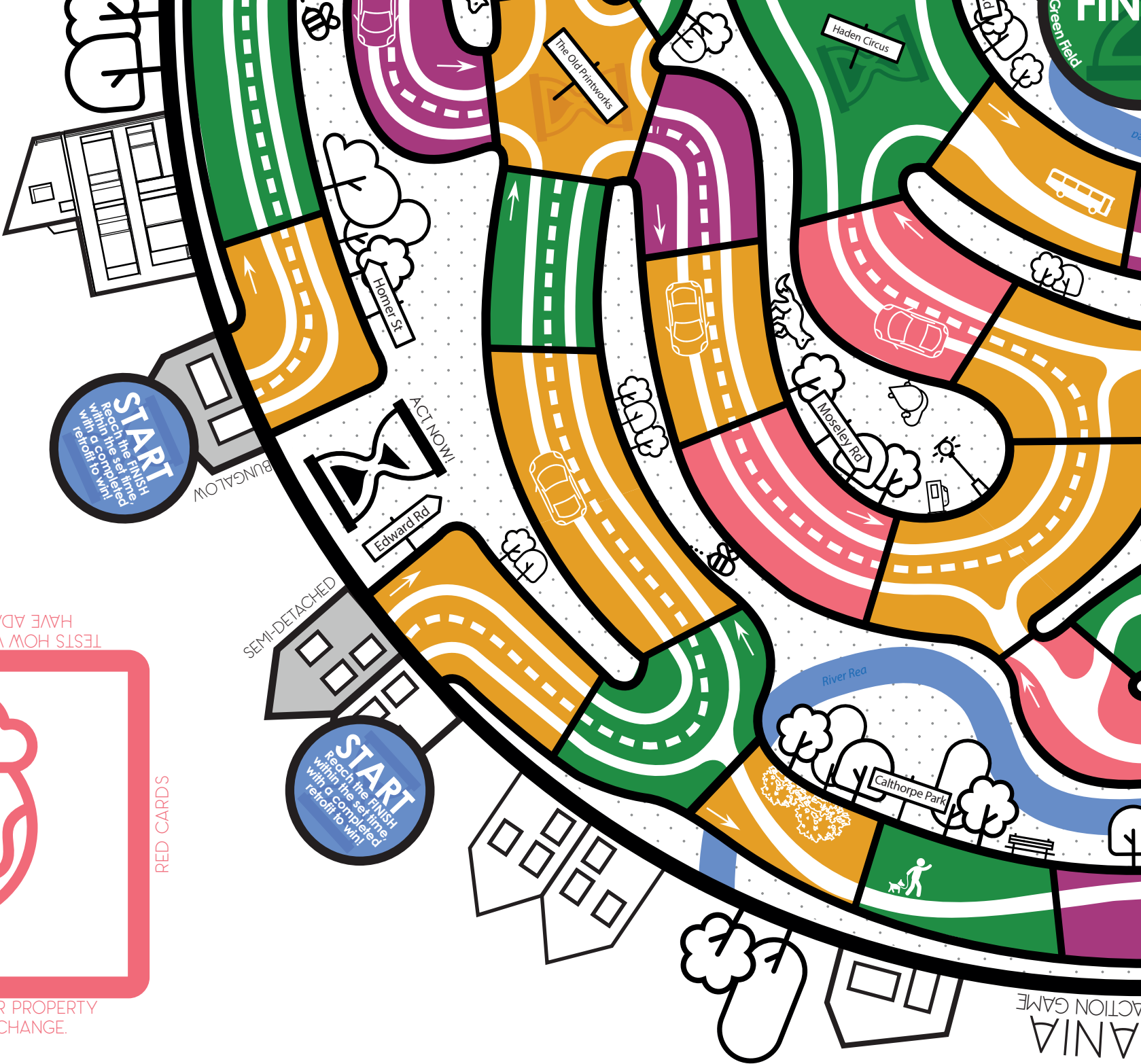
GREEN CARDS

QUESTIONS RELATING TO THE BUILT ENVIRONMENT.
THEY ENABLE YOU TO OBTAIN RETROFIT COMPONENTS.

CLIMANIA - SH

FOR FULL DETAILS READ THE FULL RU

1. Two to six players start the game with a **property to re**
2. To retrofit a property a player has to **collect 5 retrofit c**
3. Players **only have a set time (agreed beforehand)** to
4. Players can **move in any direction**; start the turn by m
5. Once players move, they land on a coloured field pi
6. Fields that have **road markings can only accommod**
7. Players **can collaborate!** To trade retrofit component



HORT RULES

RULES AVAILABLE AS A RULEBOOK



Netprofit. There are six different types of properties.

components by answering questions on green cards.

to reach the centre. Youngest player acts as **timekeeper**.

moving **two fields** before acting. They can't skip turns.

wicking up the top corresponding card which will instruct her's turn.

update one player at a time - traffic jams can occur!

ts they need to be no more than 5 spaces apart.

RED CARDS



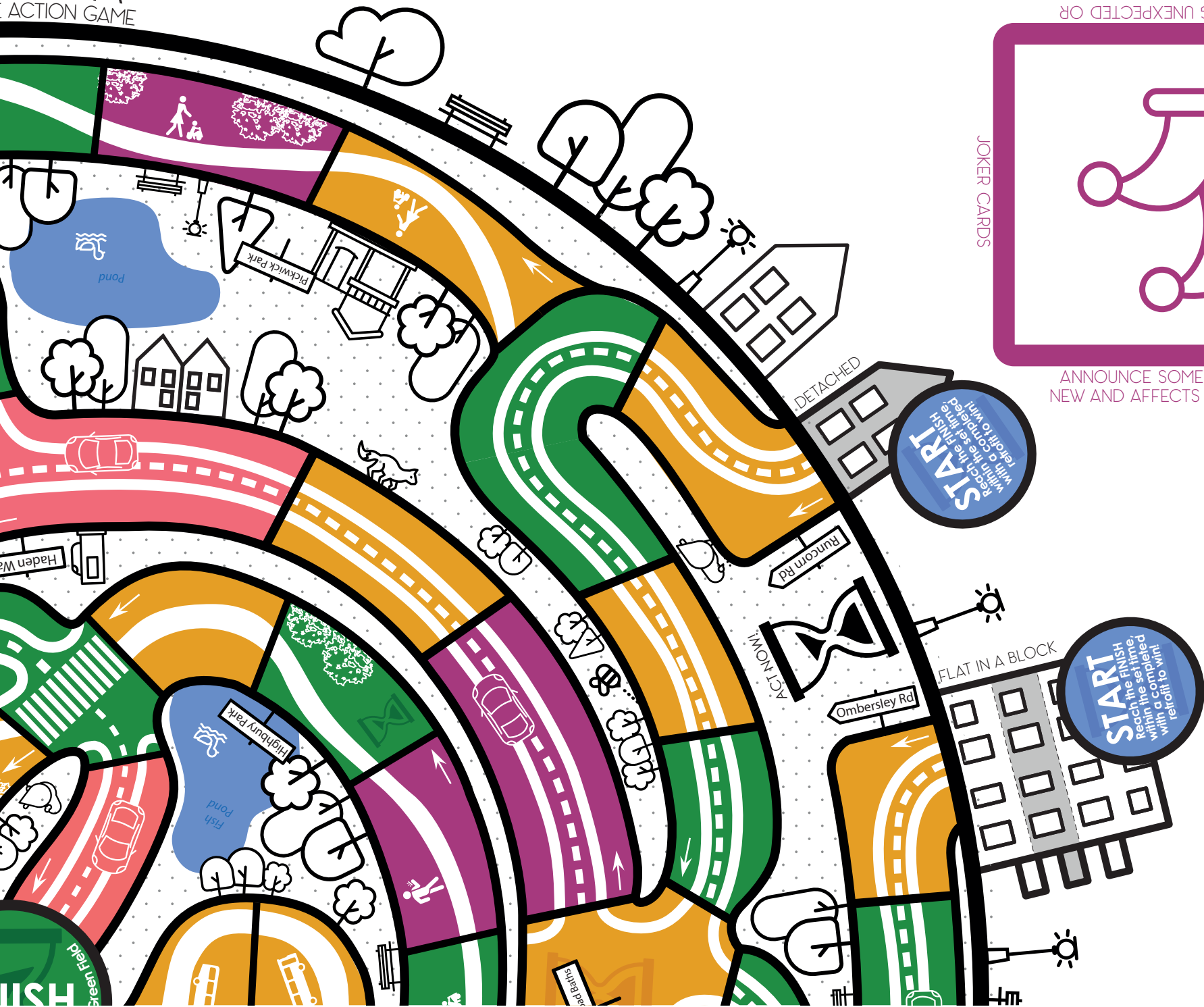
RED CARDS

TESTS HOW WELL YOU AND YOUR PROPERTY HAVE ADAPTED TO CLIMATE CHANGE.

TESTS HOW WELL YOU AND YOUR PROPERTY
HAVE ADAPTED TO CLIMATE CHANGE.

CLIMANIA

ACTION GAME



ANNOUNCE SOMETHING UNEXPECTED OR
NEW AND AFFECTS ONE OR MORE PLAYERS.

JOKER CARDS



JOKER CARDS

ANNOUNCE SOMETHING UNEXPECTED OR
NEW AND AFFECTS ONE OR MORE PLAYERS.



BIRMINGHAM CITY
University

CLIMANIA The Climate Action Game has been developed by thirteen young people from Balsall Heath, Birmingham working with researchers Claudia Corfer and Simeon Shebunova from Birmingham City University. The project collaborators include the GAP Arts Project, The Birmingham Architectural Association, The RPI West Midlands and Anthropocene Architecture School.

CLIMANIA

ACTION GAME

thegame.com/

